

42/27

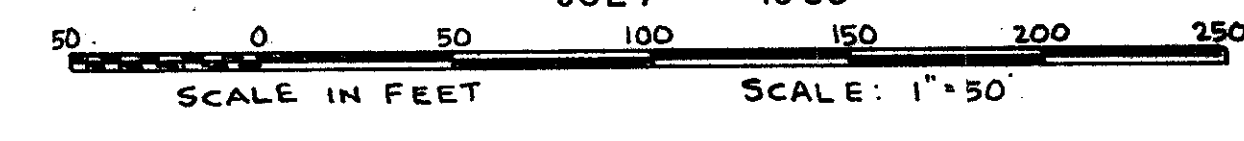
27

# BEDFORD MEWS AT WELLINGTON - P.U.D.

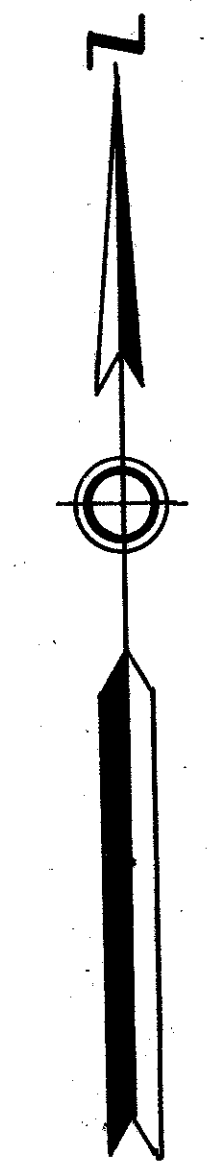
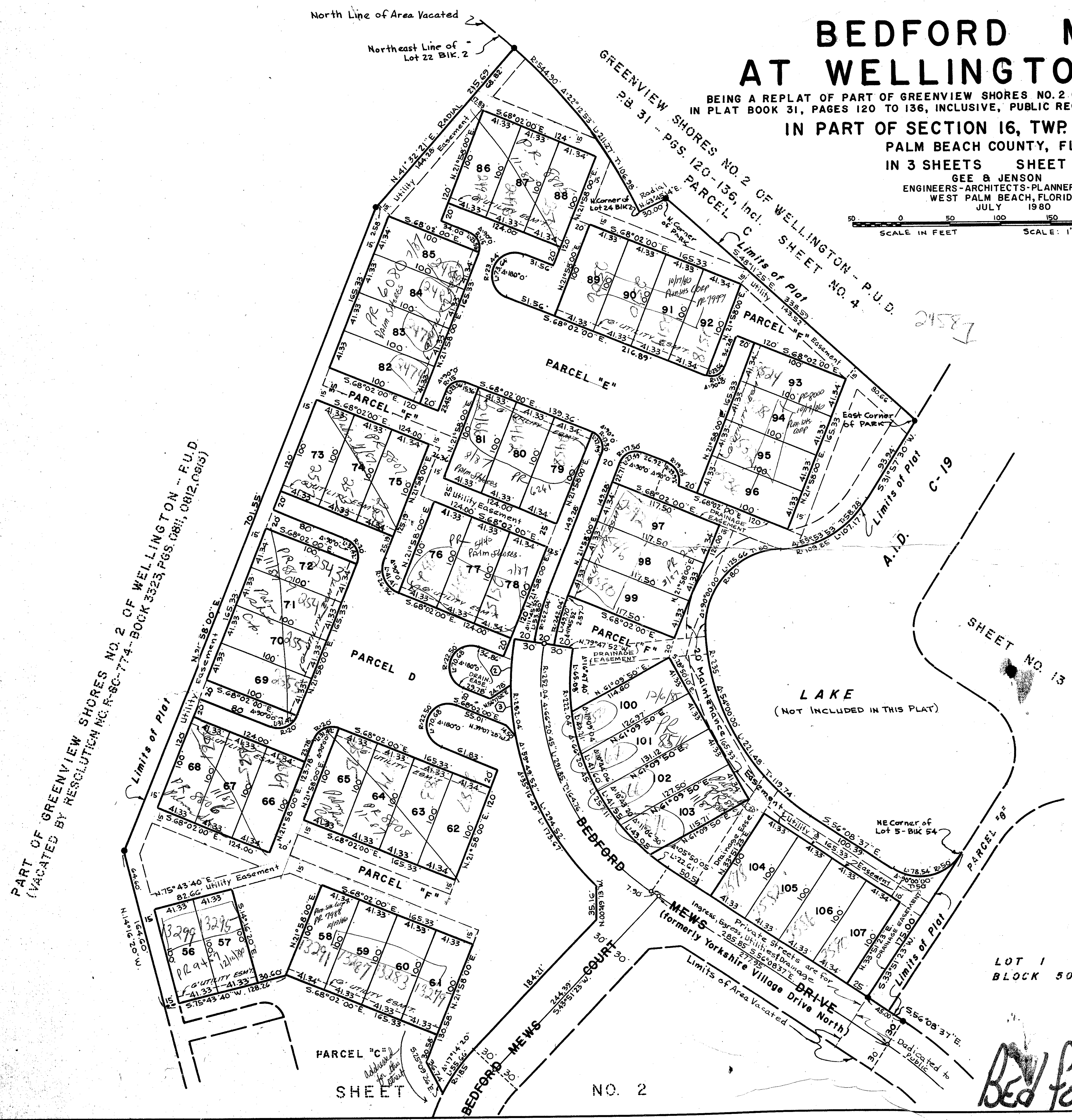
BEING A REPLAT OF PART OF GREENVIEW SHORES NO. 2 OF WELLINGTON - P.U.D. AS RECORDED IN PLAT BOOK 31, PAGES 120 TO 136, INCLUSIVE, PUBLIC RECORDS OF PALM BEACH COUNTY, FLORIDA

IN PART OF SECTION 16, TWP. 44S., RGE. 41E.  
PALM BEACH COUNTY, FLORIDA  
IN 3 SHEETS SHEET NO. 3

GEE & JENSON  
ENGINEERS-ARCHITECTS-PLANNERS, INC.  
WEST PALM BEACH, FLORIDA  
JULY 1980



STATE OF FLORIDA  
COUNTY OF PALM BEACH  
This Plat was filed for record on this day of 1981 and duly filed in Plat Book No. on page JOHN B. DUNKLE, Clerk Circuit Court By: D.C.



### NOTES

- All Bearings shown hereon are relative to an assumed meridian used throughout Wellington.
- Building Setback Lines shall be as required by Palm Beach County Zoning Regulations.
- There shall be no buildings or other structures placed on Utility Easements.
- There shall be no buildings or any kind of construction or trees or shrubs placed on Drainage Easements.
- Easements are for Public Utilities, unless otherwise noted.
- Where Utility Easements and Drainage Easements cross, Drainage Easements shall take precedent.
- denotes Permanent Reference Monument.
- denotes Permanent Control Point.

NOTE: PART OF GREENVIEW SHORES NO. 2 OF WELLINGTON - P.U.D. WAS VACATED BY RESOLUTION NO. R-80-774 BOOK 3323, PAGES 1811, 1812, & 1813.

0332-302

**CURVE DATA**

● denotes Curve Number & Location

①	R=282.04'	Δ=10°49'08"	L=53.26'	T=26.71'
②	R=282.04'	Δ=10°49'08"	L=53.26'	T=26.71'

LOT 1  
BLOCK 50

Bedford Mews At Well. 42/27